



## ZNDUS

ZNDUS has a global reputation as the market leader in the manufacturing and supply of high-quality temporary fencing, hoarding and pedestrian barriers in the UK, Germany, France, Holland, Poland and most recently the United States.

We are at the forefront of innovation in manufacturing with continued investment in our product ranges and processes to make our products the market leaders that our customers expect.

Gain a competitive advantage over top local and even national rental companies by offering a product line that is completely different than the rest. This will instantly set your company apart in an industry where product differentiation is challenging to provide.

Please do not hesitate to get in touch with us if you have any questions about our service or products.

### Head Office:

**ZND US Inc**  
**214 James Farm Rd**  
**Statesville, NC 28625**

Tel: 704.981.8660

Email: [sales@znd.com](mailto:sales@znd.com)

[www.zndus.com](http://www.zndus.com)

Designed and produced in England by HMA. [www.hma.co.uk](http://www.hma.co.uk)



Stronger  
 Safer  
**Smarter!**



Inventors of  
**SmartWeld**





# Contents:

Meeting the Toughest Demands	02
<b>Temporary Fencing</b>	<b>03</b>
Temporary Fence Stillages	9
Temporary Fence Gates	10
<b>Pedestrian Barriers</b>	<b>11</b>
Pedestrian Barrier Stillages	16
<b>Stabilizer Systems</b>	<b>17</b>
Stabilizer Accessories	18
<b>Accessories</b>	<b>21</b>
Privacy Screens	24





# Meeting the toughest demands



**ZNDUS** is a global temporary fence supplier and manufacturer that offers a large variety of **temporary fence, pedestrian and event barriers** options.

ZND Group was established in 1965 in Holland and has expanded operations throughout the UK, Germany, France, Poland and now the United States. As a temporary fence supplier, we provide products to distributors and rental companies across the world. Expanding our products to the United States will give rental companies a stronger, safer, and smarter solution to their current temporary fence and barrier offerings.

Our designs have direct and immediate benefits for our customers. Our business model is unique through superior design, engineering, automation, and world-class service. Our products have been engineered to be compatible with current products available in the US so they can easily be integrated into a rental company's current fleet without disruption.

Our temporary fencing and barrier products are designed to be stronger, safer, and smarter. We focus on the issues rental companies face with temporary fencing and work to continuously find effective solutions through our products. Our SmartWeld process provides a more durable fencing panel, our anti-climb panels help prevent injuries, our storage stillages reduce damage during transporting and storing, and our revolutionary bases allow for a more durable stabilization without sandbags.

We are the trusted temporary fence supplier around the world and are excited to launch our products into the U.S.







# Temporary Fences

- ST612
- ST812
- RT612
- RT812

Temporary fencing has proved to be extremely popular with our customers in the construction and event management industries for site demarcation and to direct the public away from construction hazards or towards secure areas.

Since 1997 the ZND group have specialised in the manufacturing and continual development of SmartWeld™ temporary fencing, creating a comprehensive range of panels, designed and manufactured to a high standard.

All our temporary fencing panels are manufactured in our highly efficient, state of the art facilities here in the US and throughout Europe, where we are able to produce over 70 different specifications and more than 10,000 fences a day.

We offer a wide variety of specification options with a choice of:

- Frame styles
- Mesh types
- Corporate identity labels
- Surface finishes



All our temporary fences can be powder coated in a colour of your choice

We also offer a comprehensive range of panels, manufactured to the highest possible standards, made to order and delivered directly to your site so you can be confident that we can meet all site situations and local health and safety requirements.

We have an extensive range of accessories to complement our panel systems including:

- Stabilizing systems
- Standard and lockable fence couplers
- Pedestrian and vehicle gates
- Height extension panels
- Privacy screens



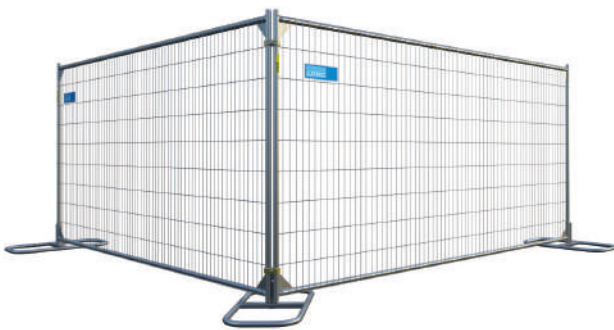
## Fence Panel Ranges

Our fence panels are split into two different series: the Square Top (ST) and the Round Top (RT).

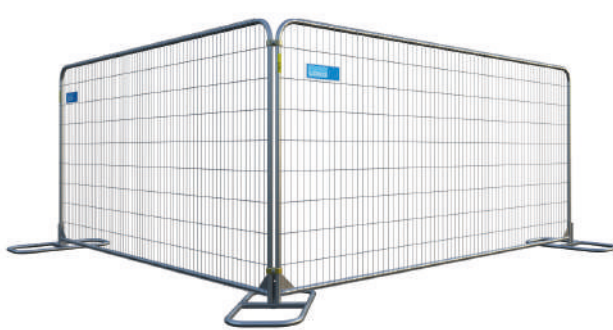
Product Range	Mesh Type	Options
ST612	Standard	V, H, VH
RT812	Anticlimb	

### Step 1: Choose your Frame style

ST



RT



ST612

Horizontal Tube Diameter: 1.375"  
Vertical Tube Diameter: 1.375"

ST812

Horizontal Tube Diameter: 1.375"  
Vertical Tube Diameter: 1.375"

RT612

Horizontal Tube Diameter: 1.375"  
Vertical Tube Diameter: 1.375"

RT812:

Horizontal Tube Diameter: 1.375"  
Vertical Tube Diameter: 1.375"

### Step 2: Choose your Mesh style

Standard



Vertical Pitch: 2.03"  
Vertical Wire Diameter: 0.126"  
Horizontal Pitch: 7.66" (6ft panel)  
8.44" (8ft panel)  
Horizontal Wire Diameter: 0.126"

Anticlimb



Vertical Pitch: 1.22"  
Vertical Wire Diameter: 0.087"  
Horizontal Pitch: 7.66" (6ft panel)  
8.44" (8ft panel)  
Horizontal Wire Diameter: 0.126"

### Step 3: Choose your support tube options

These options can add either a vertical or horizontal tube or both vertical and horizontal tube into the centre of the panel.



V



H



VH

Now you are ready to order your fence panel, pick a frame type, select which mesh you want and choose from the optional extras to improve the panel quality.



# ST612

Our ST612 range has vertical and horizontal tube diameters of 1-3/8" (1.375") and is available with Standard or Anticlimb mesh. Corner plates are standard on all panels.



Illustration shows ST612VH Standard panels

Panel Name	Stock Code	Dimension (Feet and inches)	Weight (Lbs)	Finish
ST612 Standard	07072205	12'-0" x 6'	49	Pre-Galvanized
ST612V Standard	07072215	12'-0" x 6'	53	Pre-Galvanized
ST612H Standard	07072225	12'-0" x 6'	57.6	Pre-Galvanized
ST612VH Standard	07072235	12'-0" x 6'	61.6	Pre-Galvanized
ST612 Anticlimb	07082205	12'-0" x 6'	45.3	Pre-Galvanized
ST612V Anticlimb	07082215	12'-0" x 6'	49.3	Pre-Galvanized
ST612H Anticlimb	07082225	12'-0" x 6'	53.9	Pre-Galvanized
ST612VH Anticlimb	07082235	12'-0" x 6'	57.9	Pre-Galvanized

Please refer to the guide on page 4 for more information on fence types.

# ST812

Our ST812 range has vertical and horizontal tube diameters of 1-3/8" (1.375") and is available with Standard or Anticlimb mesh. Corner plates are standard on all panels.



Illustration shows ST812VH Standard panels

Panel Name	Stock Code	Dimension (Feet and inches)	Weight (Lbs)	Finish
ST812 Standard	07072405	12'-0" x 8'	58.9	Pre-Galvanized
ST812V Standard	07072415	12'-0" x 8'	64.4	Pre-Galvanized
ST812H Standard	07072425	12'-0" x 8'	67.5	Pre-Galvanized
ST812VH Standard	07072435	12'-0" x 8'	72.9	Pre-Galvanized
ST812 Anticlimb	07082405	12'-0" x 8'	53.8	Pre-Galvanized
ST812V Anticlimb	07082415	12'-0" x 8'	59.3	Pre-Galvanized
ST812H Anticlimb	07082425	12'-0" x 8'	62.4	Pre-Galvanized
ST812VH Anticlimb	07082435	12'-0" x 8'	67.8	Pre-Galvanized

Please refer to the guide on page 4 for more information on fence types.



# RT612

Our RT612 range has vertical and horizontal tube diameters of 1-3/8" (1.375") and is available with Standard or Anticlimb mesh. Corner plates are standard on all panels.



Illustration shows RT612VH Standard panels

Panel Name	Stock Code	Dimension (Feet and inches)	Weight (Lbs)	Finish
RT612 Standard	07073205	12'-0" x 6'	48	Pre-Galvanized
RT612V Standard	07073215	12'-0" x 6'	52	Pre-Galvanized
RT612H Standard	07073225	12'-0" x 6'	56.6	Pre-Galvanized
RT612VH Standard	07073235	12'-0" x 6'	60.6	Pre-Galvanized
RT612 Anticlimb	07083205	12'-0" x 6'	44.3	Pre-Galvanized
RT612V Anticlimb	07083215	12'-0" x 6'	48.3	Pre-Galvanized
RT612H Anticlimb	07083225	12'-0" x 6'	52.9	Pre-Galvanized
RT612VH Anticlimb	07083235	12'-0" x 6'	56.9	Pre-Galvanized

Please refer to the guide on page 4 for more information on fence types.

# RT812

Our RT812 range has vertical and horizontal tube diameters of 1-3/8" (1.375") and is available with Standard or Anticlimb mesh. Corner plates are standard on all panels.



Illustration shows RT812VH Standard panels

Panel Name	Stock Code	Dimension (Feet and inches)	Weight (Lbs)	Finish
RT812 Standard	07073405	12'-0" x 8'	57.8	Pre-Galvanized
RT812V Standard	07073415	12'-0" x 8'	63.4	Pre-Galvanized
RT812H Standard	07073425	12'-0" x 8'	66.4	Pre-Galvanized
RT812VH Standard	07073435	12'-0" x 8'	71.9	Pre-Galvanized
RT812 Anticlimb	07083405	12'-0" x 8'	52.8	Pre-Galvanized
RT812V Anticlimb	07083415	12'-0" x 8'	58.3	Pre-Galvanized
RT812H Anticlimb	07083425	12'-0" x 8'	61.4	Pre-Galvanized
RT812VH Anticlimb	07083435	12'-0" x 8'	66.8	Pre-Galvanized

Please refer to the guide on page 4 for more information on fence types.



Temporary Fences: Stillage



This stillage helps prevent the fence panels from getting damaged when not in use or when being transported thus increasing the life of the panel.

The stillage when full can be stacked on top of another stillage reducing the amount of storage space needed in the stock yard.

The riser posts are removable and store within the stillage frame. The stillage is now flatpacked and can be stacked.



This stillage can be used to carry both square top and round top fences panels

**Universal Fence Panel Stillage**  
Code: 09055501

Dimensions: L: 12'-4.4" x H: 5'-1"

Weight: 540 Lbs

Finish: Hot Dipped Galvanized

Temporary Fences: Gates



This gate provides a robust means of entering or exiting a site compound. The gate can be padlocked shut for extra security.

This gate is powder coated red - allowing entrance/exit to be easily seen from a distance.

**Pedestrian Gate 6ft Anticlimb**  
Code: 07551610

Dimension: 5'-1" x 7'-9.5"

Weight: 108 Lbs

Finish: Pre-Galvanized and Powder Coated



Any panel from the ZNDUS range can be converted into a set of vehicle gates.

**Vehicle Gate Conversion Kit**  
Code: 08052055

Dimension: 24'-1.7" x 6'-0"\*

Weight: 125lbs\*

Finish: Galvanized

\* Note: These dimensions and weight are when 2 x ST612V panels are converted into vehicle gates.



**Gate Hinge Coupler**  
Code: 09054090



**Wheel Bracket Assembly**  
Code: 09053010

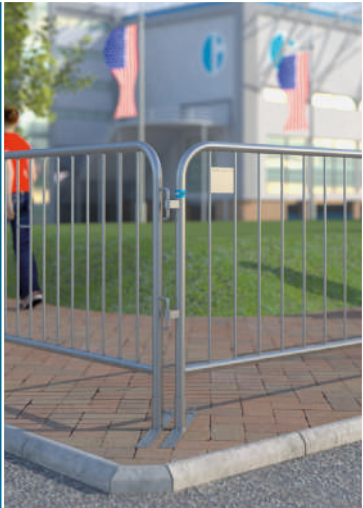


**Gate Latch Female Side**  
Code: 09053045



**Gate Latch Male Side**  
Code: 09053035





# Pedestrian Barriers

Fixed Leg Barriers  
Bar Barriers

Our pedestrian barriers are available in a range of different options, all designed to provide an effective demarcation solution. With robust tubular steel frames and designed safety features to give you the quality and reliability you need.

With inbuilt or detachable feet, and a high quality Galvanized appearance that can be coloured to match your corporate image, we have plenty of options to ensure you're getting the right barrier for the job.

Fixed legs are welded to the barrier frame in an offset position that makes the barriers ideal for stacking. A plastic insert is fitted into each leg to improve leg strength and make the barrier safer to use.

The fixed legs are further re-enforced with a support brace which triangulates the front and rear footing adding strength and protection.

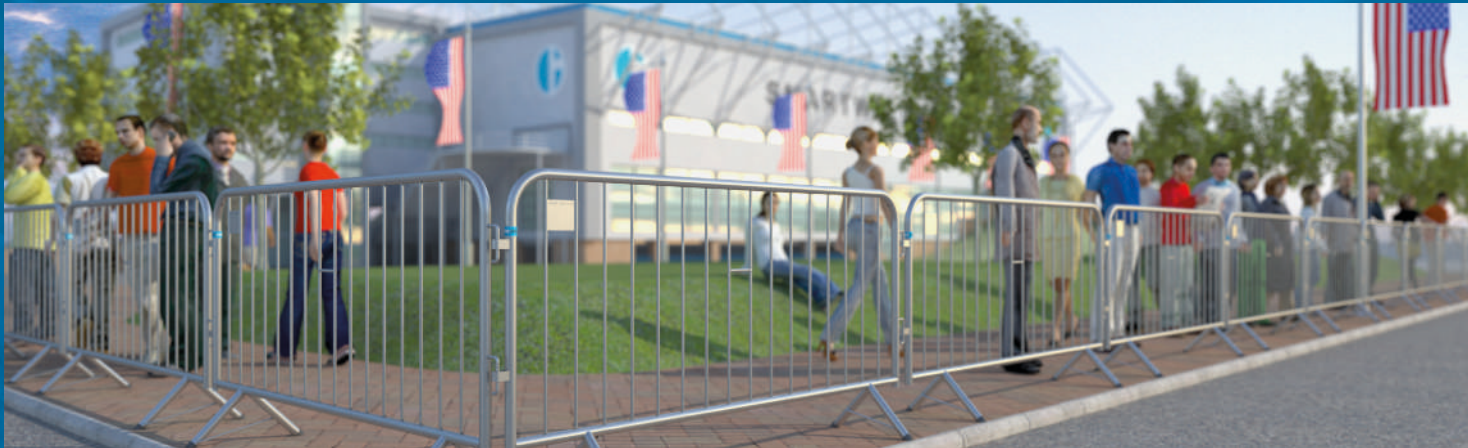
Our barriers have a strong tubular frame with vertical infill tubes.

Mig welding is used for extra strength and durability and a better long term appearance.

All our barriers can be enhanced with a range of accessories such as corporate labels and advertising covers.



All our pedestrian barriers can be powder coated in a colour of your choice



## Fixed Leg Barrier Heavy Duty

Sturdy, hand-welded barrier, non-scratch replaceable plastic feet inserts, fixed leg design, and hot dipped galvanized for longevity.



Illustration shows Fixed Leg Barrier Heavy Duty

Barrier Name	Stock Code	Dimension (Feet and Inches)	Frame Ø (Inch)	Infill (Inch)	Weight (Lbs)	Finish
Fixed Leg Barrier Heavy Duty	01063201	7'-5.4" x 3'-7.3"	1.5" & 1.5"	0.47" Diameter 4.4" Aperture	34	Hot Dipped Galvanized



Hook and eye



Leg strengthening bar



Name plate for corporate logo

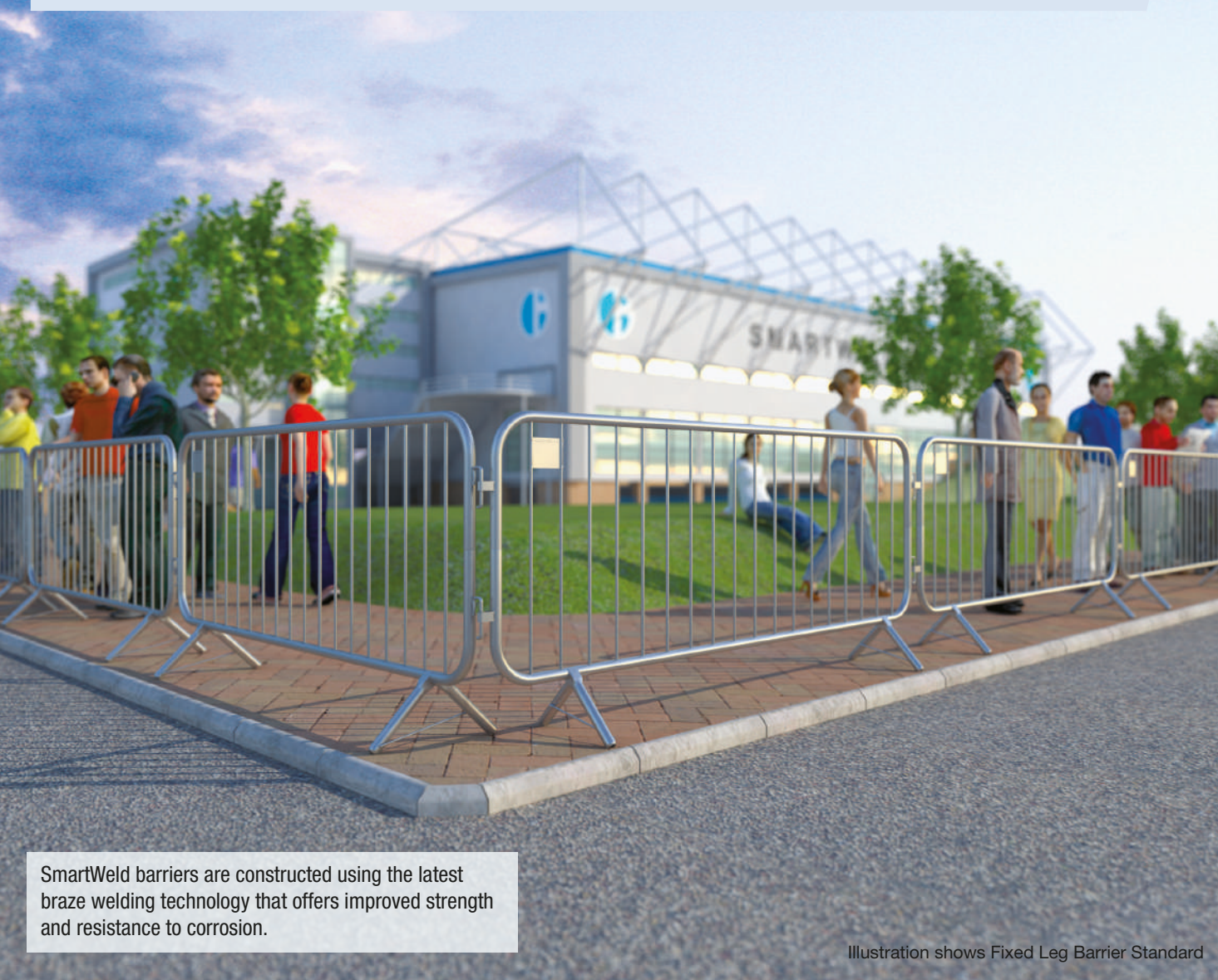


Carry Handle



Fixed Leg Barrier Standard

Light-weight, pre-galvanized, machine welded (Smartweld), round design, fixed legs.



Barrier Name	Stock Code	Dimension (Feet and Inches)	Frame Ø (Inch)	Infill (Inch)	Weight (Lbs)	Finish
Fixed Leg Barrier Standard	01063012	7'-5" x 3'-7.3"	1.5"	0.47" Diameter 4.4" Aperture	23.4	Pre-Galvanized



Hook and eye



Leg strengthening bar



Name plate for corporate logo



Swaged end safety foot

Bar Barrier Heavy Duty

Sturdy, hand-welded barrier, removable flat bar feet, and hot dipped galvanized for longevity.



Barrier Name	Stock Code	Dimensions (Feet and Inches)	Frame Ø (Inch)	Infill (Inch)	Weight (Lbs)	Finish
Bar Barrier Heavy Duty	01062201	7'-5.4" x 3'-7.3"	1.5" & 1.5"	0.47" Diameter 4.4" Aperture	38.6	Hot Dipped Galvanized



Hook and eye



Name plate for corporate logo



Single flat foot



Carry Handle



Bar Barrier Standard

Light-weight, pre-galvanized, machine welded (Smartweld), round design, removable flat feet.



Barrier Name	Stock Code	Dimension (Feet and Inches)	Frame Ø (Inch)	Infill (Inch)	Weight (Lbs)	Finish
Bar Barrier Standard	01062012	7'-5" x 3'-7.3"	1.5"	0.47" Diameter 4.4" Aperture	20.3	Pre-Galvanized



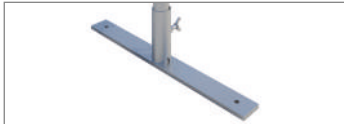
Hook and eye



Name plate for corporate logo

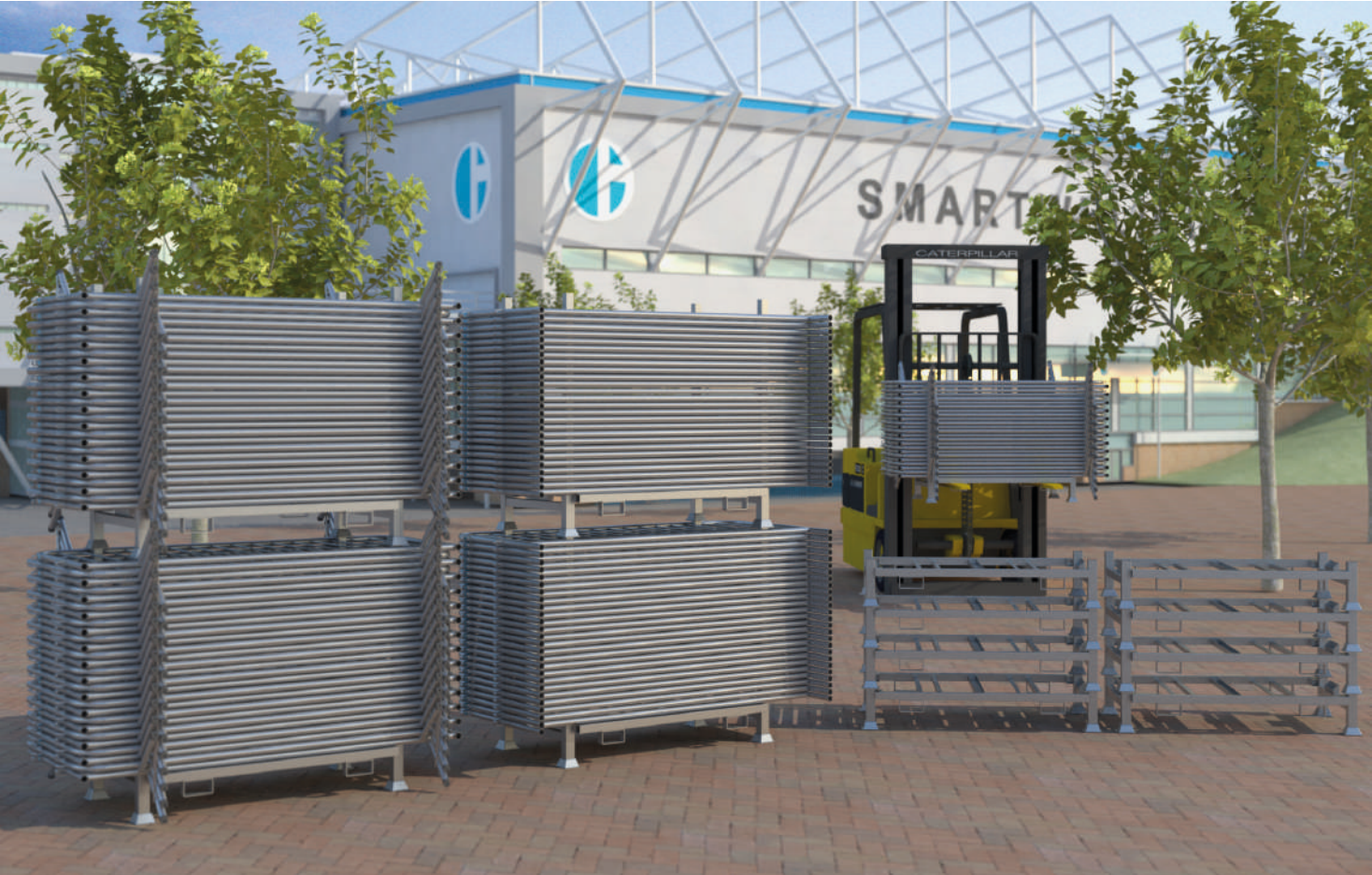


Double flat foot



Single flat foot

Pedestrian Barrier: Stillages



This stillage helps prevent the fixed leg or bar barriers from getting damaged when not in use or when being transported thus increasing the life of the barriers.

The stillage when full can be stacked on top of another stillage reducing the amount of storage space needed in the stock yard.

The riser posts are removable and store within the stillage frame. The stillage is now flatpacked and can be stacked.

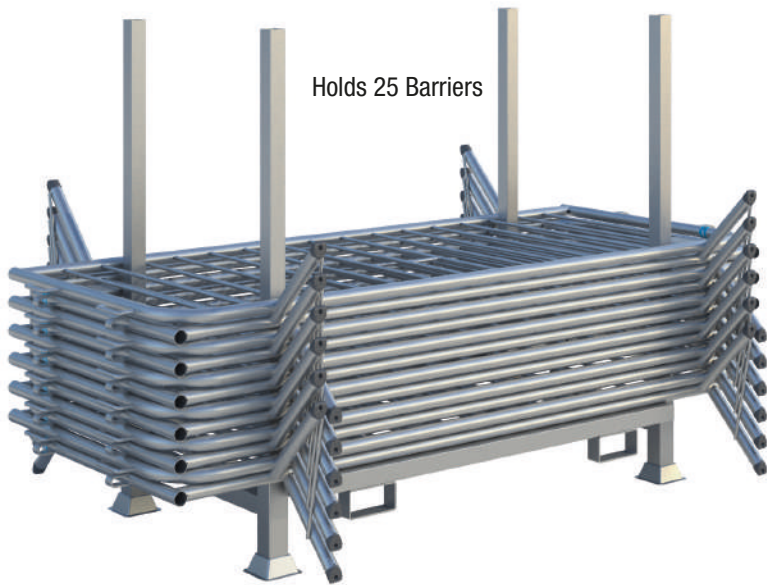
Barrier Stillage 25 HDG

Code: 09055455

Dimensions: 5'-2" x 4'-9"

Weight: 150 Lbs

Finish: Hot Dipped Galvanized



This stillage can be used to carry both Bar Barriers and Fixed Leg Barriers





# Stabilizer Systems

Thanks to our wide array of stabilizing systems, assembling a run of fence panels is now easy and straight forward.

Designed and developed for use in a range of environmental conditions, sites, surfaces and locations, our Stabilizers help you maintain the highest standards of health and safety.

To help ensure you get the correct stabilizing system for your run of fences or barriers we maintain a Customer Portal where our valued customers can access our assembly guides as well as detailed information as to the wind resistance of our stabilizing systems. All wind resistance information is backed up by detailed structural calculations.

We are also available to provide advice and guidance for your particular site requirement. See pages 19 to 22 for details of accessories and stabilizer accessories. Anti-lift devices must be used in conjunction with all suggested stabilizing methods.



This image shows the Windbreaker Plus Stabilizer Assembly  
Cinder Blocks not included

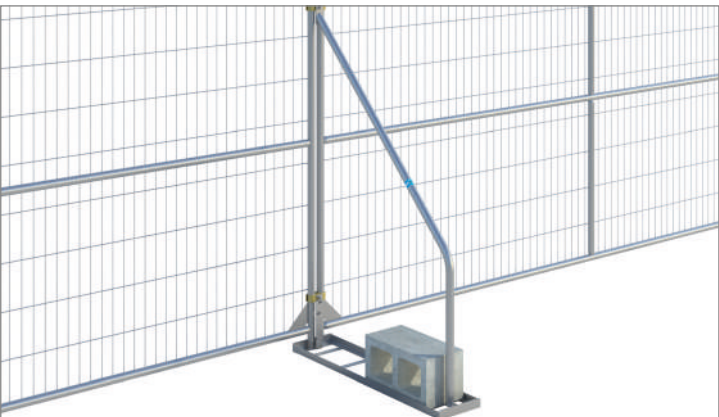
## Stabilizer Systems



<b>Windbreaker Elite Stabilizer Assembly</b>	Code: 16553100
Windbreaker Zero - Trip Foot	16553101
Windbreaker Bottom Tube	16553105
Windbreaker Stabilizer	16553115
Windbreaker Cinder Block Tray	16553125
Anti-Lift Bracket	09051040
Fence Coupler HD (Gripper)	08551320



<b>Windbreaker Plus Stabilizer Assembly</b>	Code: 16554150
Tube Stand	13001001
Windbreaker Plus Stabilizer	16554151
Cinder Block Tray	16554101
Anti-Lift Bracket	09051040
Fence Coupler HD (Gripper)	08551320



<b>Windbreaker Zero-Trip Stabilizer Assembly</b>	Code: 16554200
Windbreaker Zero-Trip Stabilizer Base	16554201
Windbreaker Zero-Trip Stabilizer	16554205
Anti-Lift Bracket	09051040
Fence Coupler HD (Gripper)	08551320

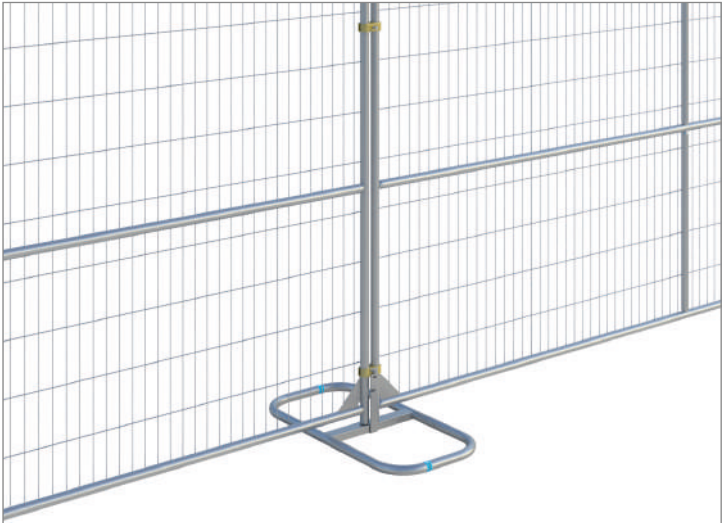


<b>Windbreaker Standard Stabilizer Assembly</b>	Code: 16554300
Cinder Block Tray	16554101
Windbreaker Stabilizer	16553115
Tube Stand	13001001
Anti-Lift Bracket	09051040
Fence Coupler HD (Gripper)	08551320

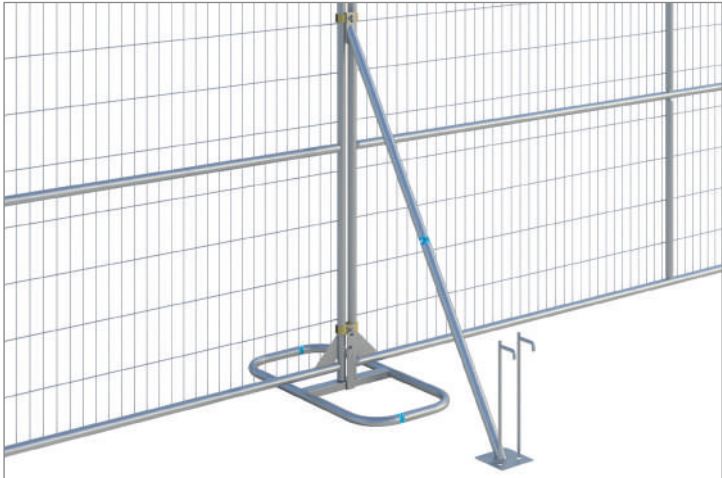
Cinder Blocks not included



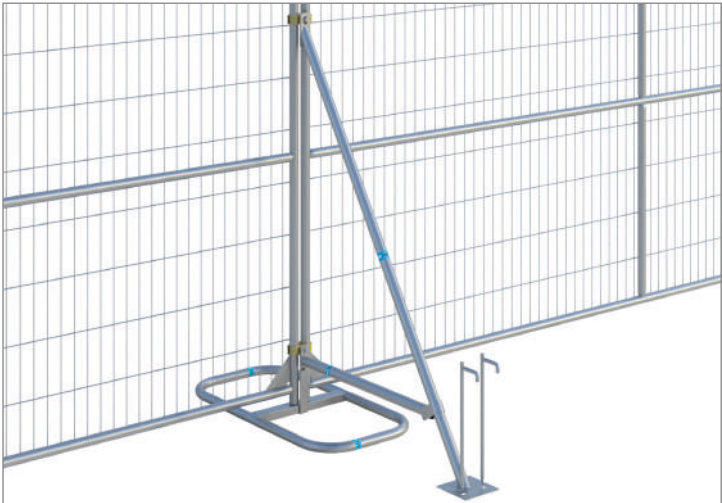
Stabilizer Systems & Accessories



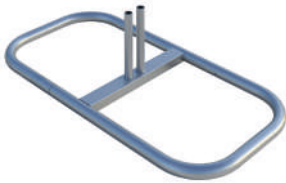
<b>Tube Stand Stabilizer</b>	Code: 13001000
Tube Stand	13001001
Anti-Lift Bracket	09051040
Fence Coupler HD (Gripper)	08551320



<b>Fence Stabilizer Assembly</b>	Code: 09551520
Fence Stabilizer	09551530
Tube Stand	13001001
Anti-Lift Bracket	09051040
Fence Coupler HD (Gripper)	08551320
Stabilizer Pin HD	09552230



<b>Fence Stabilizer with Brace Assembly</b>	Code: 09551536
Fence Stabilizer with Brace	09551538
Tube Stand	13001001
Anti-Lift Bracket	09051040
Fence Coupler HD (Gripper)	08551320
Stabilizer Pin HD	09552230



<b>Tube Stand</b>
Code: 13001001
Dimensions: 3'-0" x 9.375"
Weight: 9.7 Lbs
Finish: Pre-Galvanized



<b>Anti-Lift Bracket</b>
Code: 09051040
Dimensions: 1.97" x 9.8"
Weight: 0.5 Lbs
Finish: Pre-Galvanized



<b>Cinder Block</b>
Available from your local supplier 8 x 8 x 16"

Stabilizer Accessories



<b>Fence Stabilizer</b>
Code: 09551530
Dimensions: 3'-2.9" x 4'-10.5"
Weight: 5.5 Lbs
Finish: Pre-Galvanized



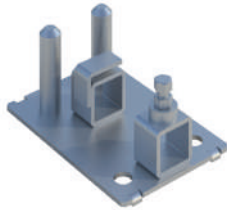
<b>Fence Stabilizer with Brace</b>
Code: 09551538
Dimensions: 3'-2.9" x 4'-10.5"
Weight: 7.7 Lbs
Finish: Pre-Galvanized



<b>Zero-Trip Stabilizer Base</b>
Code: 16554201
Dimensions: 3'-4.4" x 2.8"
Weight: 10.8 Lbs
Finish: Electro Galvanized



<b>Zero-Trip Stabilizer</b>
Code: 16554205
Dimensions: 3'-1.9" x 5'-2.1"
Weight: 5.3 Lbs
Finish: Pre-Galvanized



<b>Windbreaker Zero-Trip Foot</b>
Code: 16553101
Dimensions: 4.7"x 3.2"
Weight: 3 Lbs
Finish: Electro-Galvanized



<b>Windbreaker Bottom Tube</b>
Code: 16553105
Dimensions: 5'-3" x 1.18"
Weight: 6 Lbs
Finish: Pre-Galvanized



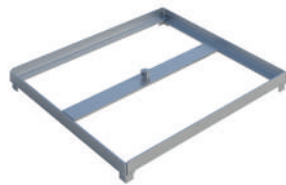
<b>Windbreaker Cinder Block Tray</b>
Code: 16553125
Dimensions: 1'-7.7" x 3.1"
Weight: 6 Lbs
Finish: Electro-Galvanized



<b>Windbreaker Stabilizer</b>
Code: 16553115
Dimensions: 5'-0" x 5'-0"
Weight: 5.5 Lbs
Finish: Pre-Galvanized



<b>Windbreaker Plus Stabilizer</b>
Code: 16554151
Dimensions: 3'-3.4" x 4'-4"
Weight: 6.2 Lbs
Finish: Pre-Galvanized



<b>Cinder Block Tray</b>
Code: 16554101
Dimensions: 1'-8.1" x 1.8"
Weight: 5.7 Lbs
Finish: Electro Galvanized



<b>Stabilizer Pin HD</b>
Code: 09552230
Dimensions: 3.5" x 1'-5.2"
Weight: 1 Lbs
Finish: Electro Galvanized



<b>Earth Anchor</b>
Code: 09552250
Dimensions: 2.6" x 1'-7.5"
Weight: 1.2 Lbs
Finish: Electro Galvanized





# Accessories

Our accessories are designed and rigorously tested to work in harmony with our fencing and barrier products and include:

- Fence feet
- Couplers
- Privacy Screens

All of our accessories are designed to enhance our fencing and barriers to not only make sure that they are safe but also secure.

The letter from the key below indicates the accessory most compatible with a product.

Key to product categories

F

Fencing

B

Barriers

We can also create bespoke accessories for all your needs. Please contact us for more information.



## Accessories



**F**  
**Z-Block**  
Code: 12551121  
Dimensions: 1'-4.9" x 6.5"  
Weight: 50 Lbs  
Finish: Self Coloured



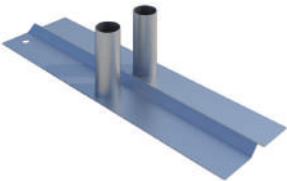
**F**  
**Z-Stand**  
Code: 12551101  
Dimensions: 3'-0.25" x 7.2"  
Weight: 7 Lbs  
Finish: Self Coloured



**F**  
**Z-Weight**  
Code: 12551115  
Dimensions: 1'-7.5" x 3.07"  
Weight: 27 Lbs  
Finish: Self Coloured



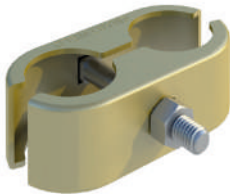
**B**  
**Flat Foot**  
Code: 01062201-2  
Dimensions: 1'-9" x 5.1"  
Weight: 5 Lbs  
Finish: Hot Dipped Galvanized



**B**  
**Double Flat Metal Foot Female**  
Code: 13052530  
Dimensions: 1'-11.4" x 4.8"  
Weight: 4 Lbs  
Finish: Pre-Galvanized



**F**  
**Fence Coupler (Standard)**  
Code: 08551201  
Dimensions: 3.4" x 1.375"  
Weight: 0.37 Lbs  
Finish: Pre-Galvanized



**F**  
**Fence Coupler HD (Gripper)**  
Code: 08551320  
Dimensions: 3.85" x 1.25"  
Weight: 0.5 Lbs  
Finish: Electro Galvanized - Gold



**F**  
**Fence Coupler HD (Griplock)**  
Code: 08551420  
Dimensions: 3.85" x 1.25"  
Weight: 0.54 Lbs  
Finish: Electro Galvanized - Gold



**F**  
**Gate Hinge Coupler**  
Code: 09054090  
Dimensions: 3.85" x 1.57"  
Weight: 0.73 Lbs  
Finish: Electro Galvanized - Gold



**F**  
**Coupler Spanner**  
Code: 08551448  
Dimensions: Ø 0.95" x 11.5"  
Weight: 0.84 Lbs  
Finish: Hard Chrome Gold




**F**  
**Lockable Coupler Socket**  
Code: 08551470  
Dimensions: Ø 0.88" x 2.5"  
Weight: 0.3 Lbs  
Finish: Hard Chrome Gold



**F**  
**Fence Extension Panel**  
Code: 09251540  
Dimensions: 12'-0" x 2'-10.4"  
Weight: 29.5 Lbs  
Finish: Pre-Galvanized



Accessories



**F**

**Fence Label**  
Code: 0551501

Dimensions: 11.4" x 3.9"

Weight: 0.17 Lbs

Finish: Digital Print



**B**

**Barrier Adhesive Label**  
Code: 0551635

Dimensions: 3.9" x 2.9"

Weight: n/a

Finish: Digital Print



**F**

**Reflective Fence Panel Strip  
PVC (12' Panel) Orange-  
White**  
Code: 02252001

Dimensions: 12'-0" x 6"

Weight: 1.1 Lbs

Finish: UV Printed PVC




**F**

**Reflective Fence Panel Strip  
PVC (12' Panel) Red-White**  
Code: 02252005

Dimensions: 12'-0" x 6"

Weight: 1.1 Lbs

Finish: UV Printed PVC



**F**

**Panel Lifting Handle**  
Code: 09052290

Dimensions: 6.1" x 3.45"

Weight: 1.3 Lbs

Finish: Powder Coated



**F**

**Gate Wheel Assembly**  
Code: 09053010

Dimensions: 1'-2.1" x 9.9"

Weight: 5.5 Lbs

Finish: Electro Galvanized



**F**

**Gate Latch Male Side**  
Code: 09053035

Dimensions: 9" x 11.4"

Weight: 4.6 Lbs

Finish: Pre-Galvanized




**F**

**Gate Latch Female Side**  
Code: 09053045

Dimensions: 9" x 11.4"

Weight: 3.3 Lbs

Finish: Pre-Galvanized



**F**

**Barbed Wire Extension**  
Code: 09052232

Dimensions: 3.85" x 1'8.9"

Weight: 3.3 Lbs

Finish: Electro Galvanised



**F**

**Barbed Wire Extension  
Y Shape.**  
Code: 09052237

Dimensions: 1'-8" x 1'-8.4"

Weight: 2.6 Lbs

Finish: Electro Galvanised



**F**

**Cable Containment  
J Hook**  
Code: 09052255

Dimensions: 1.2" x 5'-9.9"

Weight: 6.3 Lbs

Finish: Pre-Galvanized



**F**

**Cable Containment  
J Hook Foot**  
Code: 09052260

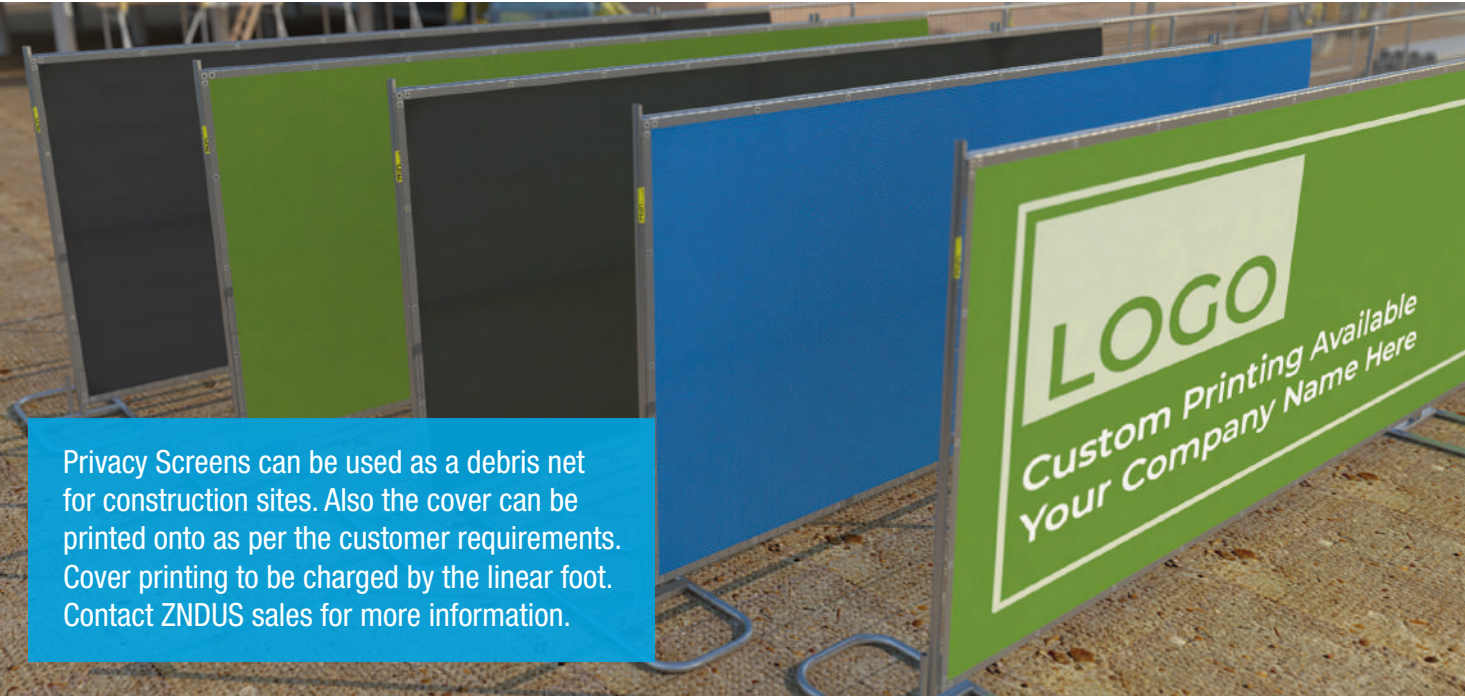
Dimensions: 1'-8.3" x 10.6"

Weight: 4.2 Lbs

Finish: Pre-Galvanized

Accessories: Privacy Screens

Privacy Screens		Weight (Lbs)	Size
0957001	Fence Cover Green 6'	7.8	5'-8" x 50'-0"
0957005	Fence Cover Black 6'	7.8	5'-8" x 50'-0"
0957011	Fence Cover Royal Blue 6'	7.8	5'-8" x 50'-0"
0957015	Fence Cover Custom Printed	N/A	As requested
0957051	Fence Cover Green 8'	10.6	7'-8" x 50'-0"
0957055	Fence Cover Black 8'	10.6	7'-8" x 50'-0"



Privacy Screens can be used as a debris net for construction sites. Also the cover can be printed onto as per the customer requirements. Cover printing to be charged by the linear foot. Contact ZNDUS sales for more information.



**Product Development**

Examples of materials handling equipment currently being developed.

Contact ZNDUS with any requests or for more details.