

A15/AL10 ALUMINUM RAILING SYSTEM



STYLISH VERSATILITY. TRUSTWORTHY CRAFTSMANSHIP.

Long-lasting, rust-resistant aluminum railing that seamlessly combines functionality with modern design.

RailMaster AL15/AL10 Aluminum Railing expertly blends superior craftsmanship and modern design, creating a visually striking and dependable railing solution that can elevate any outdoor living space. Its sleek, high-quality design not only enhances the aesthetic appeal of the space but also reflects your unwavering commitment to delivering excellence in every detail.

Designed for professional contractors, RailMaster features pre-assembled level and stair rail panels and pre-bracketed line, end, and corner plated posts for quick installation. We also offer easy-to-assemble knock-down kits for added flexibility without compromising on quality.

Elevate your next railing project with RailMaster - built to endure the elements!

- **AAMA 2605** Grade Textured Black Powder Coating Finish for Durability
- 20-year Limited Warranty for Residential Applications
- 10-year Limited Warranty for Commercial Applications

AL15/AL10 PRE-ASSEMBLED LEVEL & STAIR PANELS

- Pre-Assembled Level and Stair Rail Sections for Ease of Installation
- Panels Available in 6' and 8' Lengths; 36" and 42" Heights
- Square Balusters: 3/4" and 5/8" Options
- Top and Bottom Rails: 1-1/2"W x 1-1/4"H
- Top Rail Armor Encapsulates Top Rail for Strength: 1.85"W x 1.32"H
- 8' Level and Stair Rail Panels Include a Foot Block for Added Support

AL15

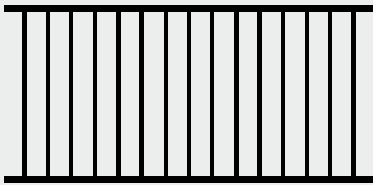
LEVEL RAIL PANEL - 3/4"

N25010	6'x36"	3/4" Baluster (15 ct)
N25011	8'x36"	3/4" Baluster (20 ct)
N25016	6'x42"	3/4" Baluster (15 ct)
N25017	8'x42"	3/4" Baluster (20 ct)

AL10

LEVEL RAIL PANEL - 5/8"

N23655	6'x36"	5/8" Baluster (15 ct)
N23659	8'x36"	5/8" Baluster (20 ct)
N23657	6'x42"	5/8" Baluster (15 ct)
N23661	8'x42"	5/8" Baluster (20 ct)



Level Rail Panel

AL15

NOW AVAILABLE Pre-assembled Stair Panels

STAIR RAIL PANEL - 3/4"

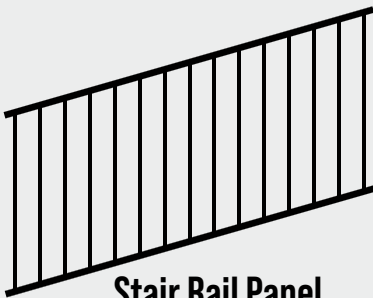
N30476	6'x36"	3/4" Baluster (15 ct)
N30478	8'x36"	3/4" Baluster (20 ct)
N30477	6'x42"	3/4" Baluster (15 ct)
N30479	8'x42"	3/4" Baluster (20 ct)

AL10

NOW AVAILABLE Pre-assembled Stair Panels

STAIR RAIL PANEL - 5/8"

N30472	6'x36"	5/8" Baluster (15 ct)
N30474	8'x36"	5/8" Baluster (20 ct)
N30473	6'x42"	5/8" Baluster (15 ct)
N30475	8'x42"	5/8" Baluster (20 ct)



Stair Rail Panel



AL15/AL10 LEVEL & STAIR RAIL KITS

- Knock-Down Rail Kits are Available for Ease of Transport
- Rail Kits Available in 6' and 8' Lengths; 36" and 42" Heights
- Top and Bottom Rails with Pre-routed Holes to Assist with Baluster Spacing

Rail Kits Include:

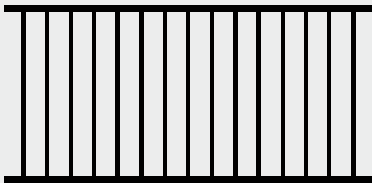
- Square Balusters: 3/4" and 5/8" Options
- Top and Bottom Rails: 1-1/2"W x 1-1/4"H
- Top Rail Armor Encapsulates Top Rail for Strength: 1.85"W x 1.32"H
- 8' Level and Stair Rail Kits Include a Foot Block for Added Support

AL15

LEVEL RAIL KITS - 3/4"		
N25012	6'x36"	3/4" Baluster (15 ct)
N25013	8'x36"	3/4" Baluster (20 ct)
N25018	6'x42"	3/4" Baluster (15 ct)
N25019	8'x42"	3/4" Baluster (20 ct)

AL10

LEVEL RAIL KITS - 5/8"		
N23666	6'x36"	5/8" Baluster (15 ct)
N23670	8'x36"	5/8" Baluster (20 ct)
N23668	6'x42"	5/8" Baluster (15 ct)
N23672	8'x42"	5/8" Baluster (20 ct)



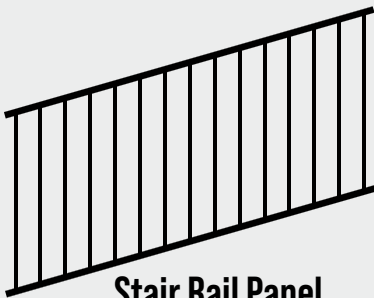
Level Rail Panel

AL15

STAIR RAIL KITS - 3/4"		
N25014	6'x36"	3/4" Baluster (15 ct)
N25015	8'x36"	3/4" Baluster (20 ct)
N25020	6'x42"	3/4" Baluster (15 ct)
N25021	8'x42"	3/4" Baluster (20 ct)

AL10

STAIR RAIL KITS - 5/8"		
N23663	6'x36"	5/8" Baluster (15 ct)
N23667	8'x36"	5/8" Baluster (20 ct)
N23665	6'x42"	5/8" Baluster (15 ct)
N23669	8'x42"	5/8" Baluster (20 ct)



Stair Rail Panel



AL15/AL10 POST KITS

- Plated Posts with Pre-drilled Anchor Holes Enable Faster Installation
- Posts Available in 2.5" x 2.5" (4.5" sq base plate) and 3" x 3" (5" sq base plate)
- Line, End, and Corner Posts Feature Pre-mounted Brackets for Faster Installation
- Multi-use Blank Post for Corner, End, and Line Applications
- Compatible with AL15 and AL10 Aluminum Railing Systems

NOW AVAILABLE Pre-Bracketed Corner and End Posts / Taller (39" & 45") Blank and Line Posts

2.5" x 2.5"		3" x 3"	
N23683	37" Line Post	N23692	37" Line Post
N30179	37" End Post	N30183	37" End Post
N30178	37" Corner Post	N30182	37" Corner Post
N29245	39" Line Post	N29249	39" Line Post
N30181	39" End Post	N30185	39" End Post
N30180	39" Corner Post	N30184	39" Corner Post
N23685	43" Line Post	N23694	43" Line Post
N29247	45" Line Post	N29251	45" Line Post
N23679	37" Blank Post	N23687	37" Blank Post
N29252	39" Blank Post	N29248	39" Blank Post
N23681	43" Blank Post	N23690	43" Blank Post
N29246	45" Blank Post	N29250	45" Blank Post
N23696	47" Stair Post	N23700	47" Stair Post
N23698	53" Stair Post	N23701	53" Stair Post



ESR-5480: Tested and approved by these standards

RailMaster RESIDENTIAL APPLICATIONS

2.5" post → Can be used with 6' & 8' panels
3" post → Can be used with 6' & 8' panels

IRC: International Residential Code

- Covers the construction and safety standards for residential buildings, primarily focusing on detached one- and two-family dwellings and townhouses up to 3 stories.
- **WHEN IS RAILING REQUIRED:** For decks that are more than **30"** above the ground.*
- **RAIL HEIGHT:** Minimum 36" above the deck/walking surface.*

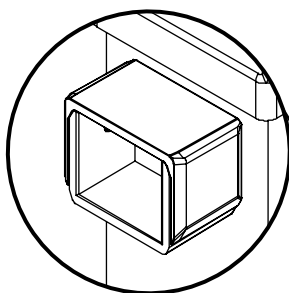
RailMaster COMMERCIAL APPLICATIONS

2.5" post → Can **ONLY** be used with 6' panels
3" post → Can be used with 6' & 8' panels

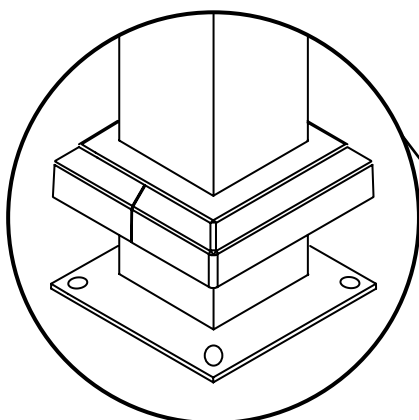
IBC: International Building Code *(Commercially certified)*

- Sets forth regulations for building design, construction methods, etc., for a broader range of structures, including commercial buildings, multi-family buildings, and other non-residential facilities.
- Applies to all buildings and structures beyond the scope of the code and provisions of the IRC.
- **RAIL HEIGHT: Minimum 42"** above the walking surface.

**Pre-mounted Brackets
for Ease of Installation**



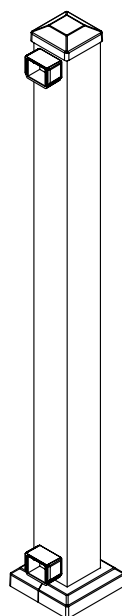
**Plated Post with
Pre-drilled Anchor Holes**



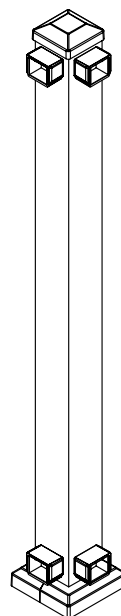
Line Post

Line, End & Corner Post Kits Include:

- Plated Post with Pre-Mounted Brackets
- Post cap and Post Skirt
- Rail/Bracket Covers and Screws



End Post

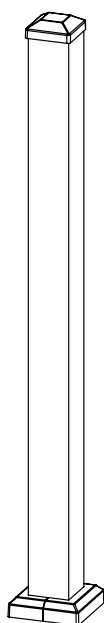


Corner Post

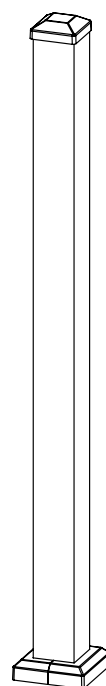
Blank* & Stair Post Kits Include:

- Plated Post
- Post Cap and Post Skirt

** Pilot Hole Tool Included to Help
with Bracket Placement*



Blank Post



Stair Post

AL15/AL10 PRE-ASSEMBLED GATES

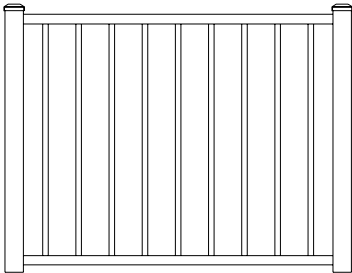
Pre-Assembled Gates with 2.5" Uprights

- Uprights: 2.5" x 2.5"
- Square Balusters: 3/4" and 5/8" Options
- Top & Bottom Rails: 1-1/2"W x 1-1/4"H
- Top Rail Armor: 1.85" x 1.32"



AL15 PRE-ASSEMBLED GATES		
N25307	4'x36"H Full Gate	3/4" Baluster
N25308	4'x42"H Full Gate	3/4" Baluster

AL10 PRE-ASSEMBLED GATES		
N23658	4'x36"H Full Gate	5/8" Baluster
N23660	4'x42"H Full Gate	5/8" Baluster



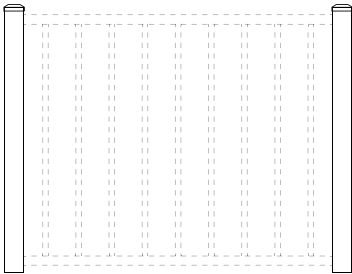
Assembled Gate

AL15/AL10 GATE UPRIGHTS

Gate Uprights

- 36" and 42" Height Options
- Pre-routed Hole on Top and Bottom to Slide in Panel (Sold Separately)
- Posts Sold Separately
- Compatible with AL15 and AL10 Aluminum Railing Systems

GATE UPRIGHTS	
N23662	36"H Uprights (set of 2)
N23664	42"H Uprights (set of 2)



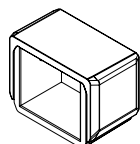
Gate Uprights

AL15/AL10 ACCESSORIES & REPLACEMENT PARTS

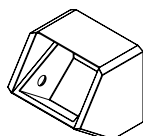
Compatible with AL15 and AL10 Aluminum Railing Systems.

ACCESSORIES	
N23673	Adjustable Brackets for Level Rail (4 pc)*
N23743	Adjustable Brackets for Stair Rail (4 pc)*
N23671	Brackets for Level Rail (4 pc)*
N23675	Brackets for Stair Rail (4 pc)*
N23674	Drink Rail Brackets (4 pc)*
N23680	6' Flat Top Rail Accent with Drink Edge
N23676	6' Rounded Top Rail Accent
N23682	8' Flat Top Rail Accent with Drink Edge
N23678	8' Rounded Top Rail Accent
N33915	Continuous Rail Cap for 2.5" Line Post
N33916	Continuous Rail Cap for 2.5" End Post
N33917	Continuous Rail Cap for 2.5" Corner Post
N33918	Continuous Rail Cap for 3" Line Post
N33919	Continuous Rail Cap for 3" End Post
N33920	Continuous Rail Cap for 3" Corner Post
N26409	Black Touch Up Paint - Aerosol Can, 12.5 oz
N26410	Black Touch Up Paint - Pen, 3 oz

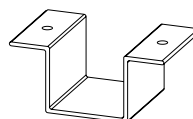
*Includes Screws



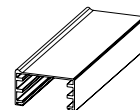
Bracket with Screws
for Level Rail



Bracket with Screws
for Stair Rail

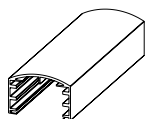


Drink Rail Bracket

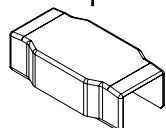


Flat Top Rail Accent
with Drink Edge

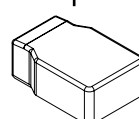
NEW Continuous Rail Cap



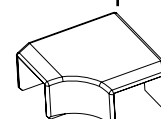
Rounded Top Rail Accent



Continuous Rail Cap
for Line Post



Continuous Rail Cap
for End Post



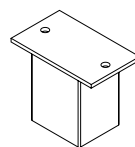
Continuous Rail Cap
for Corner Post



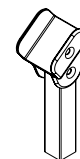
Touch Up
Spray



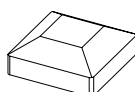
Touch Up
Pen



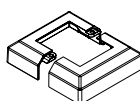
Fixed Foot Block
for Level Rail



Adjustable Foot Block
for Stair Rail



Post Cap

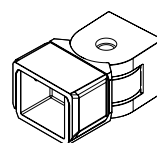


Post Trim

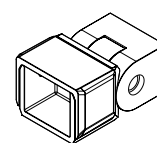


Torx Head Self
Tapping Screw

REPLACEMENT PARTS	
N23677	Fixed Foot Block for Level Rail
N23744	Adjustable Foot Block for Stair Rail
N23688	2.5" Post Cap
N23684	2.5" Post Trim
N23689	3" Post Cap
N23686	3" Post Trim
N23691	#10 x 1" Torx Head ST Screw 410 SS (12 pc)



Adjustable
Bracket with Screws
for Level Rail



Adjustable
Bracket with Screws
for Stair Rail

ELEVATE YOUR NEXT RAILING PROJECT WITH
RailMaster[™]
BUILT TO ENDURE THE ELEMENTS!



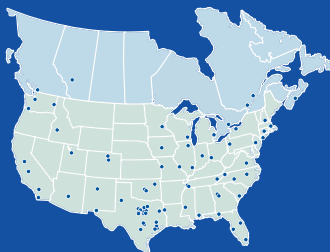
Fence & Deck Supply

MasterHalco.com

Branch service centers are located
throughout North America.

RailMaster is a registered trademark of Master Halco.

©7/25



Scan me!

Find your local
Master Halco branch
and contact us today!