

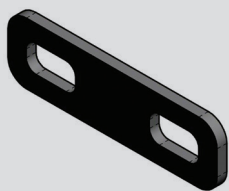
Product Data Sheet



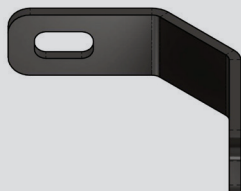
Palisade Fencing **Component Hardware**

We offer all the hardware you will need to make your CDH Palisade Security Fencing installation successful. Straight, Corner and Termination Plates are specially designed to work with our break-away nuts and anti-pry bolts to prevent tampering and provide the highest level of security.

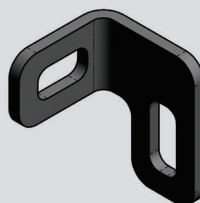
Contact CDH for more information.



Straight Connecting Plate



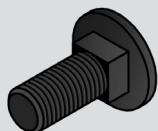
Corner Plate



Right-Hand Termination Plate



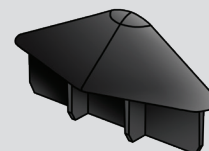
Left-Hand Termination Plate



Bolt



Nut



Post Cap

Straight Connecting Plates

These plates secure the palisade fencing rails to the posts and are available in two sizes.



Long Plate (ICC Compliant)	U.S.	METRIC
Length	5.25 in	133 mm
Height	1.25 in	32 mm
Thickness	.2 in	5 mm
Weight	5.6 oz	0.16 kg
Short Plate	U.S.	METRIC
Length	4.25 in	108 mm
Height	1.25 in	32 mm
Thickness	.2 in	5 mm
Weight	4.5 oz	0.13 kg

Material Galvanized Steel
Finish Powder Coated
Colors Black, custom colors by request

Corner Plates

These plates create an accurate 90-degree corner for you palisade fencing.

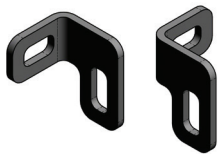


	U.S.	METRIC
Weight	6.7 oz	0.19 kg
Height	1.2 in	30 mm
Thickness	.2 in	5 mm

Material Galvanized Steel
Finish Powder Coated
Colors Black, custom colors by request

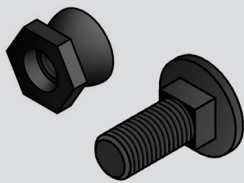
Right-Hand and Left-Hand Termination Plates

These plates have been designed to provide a safe and secure way to end a run of palisade fencing.



	U.S.	METRIC
Weight	6.7 oz	0.19 kg
Height	1.2 in	30 mm
Thickness	.2 in	5 mm

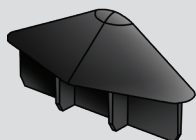
Material Galvanized Steel
Finish Powder Coated
Colors Black, custom colors by request



Nuts & Bolts

The hexagonal nuts and bolts are hot-dipped galvanized and coated black (or custom color) to match the fencing components. High-tensile grade bolts are secured with break-away nuts that, when tightened to a particular torque level, leave behind a smooth and attractive tamper-proof surface.

- M8 nuts and bolts are used together to connect the vertical pickets to the rails.
- M12 nuts and bolts are used together to connect the rails to the posts.



Post Caps

Post caps are made of high-strength plastic to protect the post from the weather while offering a clean finish.

Product Data Sheet

Palisade Fencing **Component Hardware**

Code Approvals & Performance Standards

- CDH Fencing complies with ICC ESL-1435
- ASTM A 653/A 653M – Standard Specification for Steel Sheet, Zinc-Coated (Galvanized) or Zinc-Iron Alloy-Coated (Galvannealed) by the Hot-Dip Process
- ASTM F2408 – Standard Specification for Ornamental Fences Employing Galvanized Steel Tubular Pickets
- ASTM F2814 – Standard Guide for Design and Construction of Ornamental Steel Picket Fence Systems for Security Purposes
- ASTM B117 – Standard Practice for Operating Salt Spray (Fog) Apparatus
- ASTM D523 (60° Method) – Standard Test Method for Specular Gloss
- ASTM D822 – Standard Practice for Filtered Open Flame Carbon-Arc Exposures of Paint and Related Coatings
- ASTM D1654 – Standard Test Method for Evaluation of Painted or Coated Specimens Subjected to Corrosive Environments
- ASTM D2244 – Standard Practice Calculation for Color Tolerances and Color Differences from Instrumentally Measured Color Coordinates
- ASTM D2794 – Standard Test Method for Resistance of Organic Coatings to the Effects of Rapid Deformation (Impact)
- ASTM D3359-Method B – Standard Test Method for Rating Adhesion by Tape Test
- ISO 9001:2015 Certification for CDH manufacturing facility in Warren, OH