



## 20 YEAR LIMITED WARRANTY

Highland+ Steel Commercial Fencing products are produced with the highest quality material and handled with the utmost respect. Our team of professionals can cater to most demands and customizations that may be requested by the industry.

This limited warranty is only valid to the original purchaser, and is not transferable to any other party. This limited warranty begins its validity starting from the date of fence installation.

This 20 Year Limited Warranty is a promise that we give to our customers to secure and protect them from issues that may arise with the product. This limited warranty covers specific defects in material and workmanship of the product only. Master Halco warrants its Highland+ Steel Commercial Fencing products against the paint cracking, peeling, chipping, corroding, or blistering. This warranty does not apply in marine, salty, or harsh environmental conditions. This warranty becomes invalid if the product is improperly installed, altered, or misused; damaged by negligence, abuse, or accident; damaged in transit or mishandled; exposed to corrosive elements; or damaged by acts of god. This warranty does not cover the appearance associated with normal weathering.

Furthermore, it does not cover damage caused by surface mold, mildew, and oxidation caused by airborne chemicals or by air pollution. This warranty is void if the product is exposed to the application of paint, varnish, chemicals, or chemical cleaning agents not approved by Master Halco.

**Under this warranty, Master Halco is limited to crediting any damaged product that has:**

- 1 Damage deemed to have originated during the manufacturing period.
- 2 Faulty installation issues caused by defective product originating from the manufacturing period.
- 3 Paint issues deemed to have originated during the manufacturing period.
- 4 Mechanism issues deemed to have originated during the manufacturing period.
- 5 Damage caused from packaging materials deemed to originate from the manufacturing period.

If the material appears to have a defect, the original end user must advise the contractor who installed the material. Return of this warranty form is not a condition of warranty coverage. The end user must adequately prove that the material installed is Highland+ Steel Commercial Fencing. If a claim is made against this warranty, Master Halco will first require pictures, and a written summary of the issue. If a determination cannot be made using the submitted material, Master Halco will present an agent at its expense and time frame to inspect the product.

**This limited warranty is also limited to the distance of the product being stored/installed to Saltwater Coasts**

0 - 1 mile from coast line: 2 years

2 - 20 miles from coast line: 8 years

>20 miles from coast line: 20 years

### REGISTRATION INFORMATION

Thank you for your purchase of your Highland+ Steel Commercial Fencing product. Please take a moment to register your product to ensure your receipt of all the associated Master Halco warranty benefits.

Save yourself the postage and register your warranty online at: [MasterHalco.com/Warranty](https://MasterHalco.com/Warranty)

Or, please save the original information, print and complete all lines of required information below, and mail a legible copy to MASTER HALCO • ATTN: WARRANTY REGISTRATION • 3010 LBJ FREEWAY SUITE 800 • DALLAS, TEXAS 75234

NAME \_\_\_\_\_

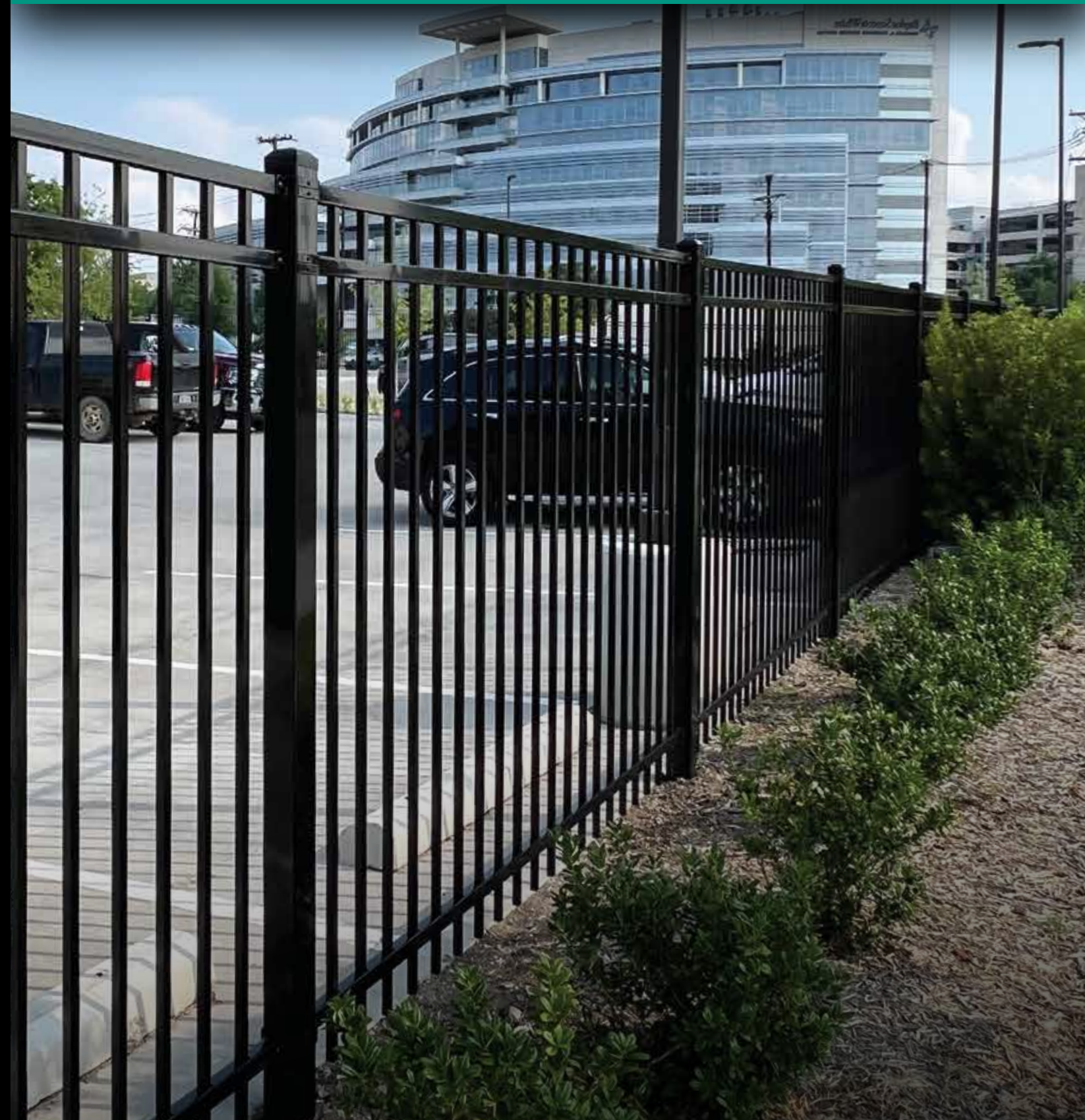
ADDRESS \_\_\_\_\_

PHONE \_\_\_\_\_ DATE PURCHASED \_\_\_\_\_

EMAIL \_\_\_\_\_ DATE INSTALLED \_\_\_\_\_

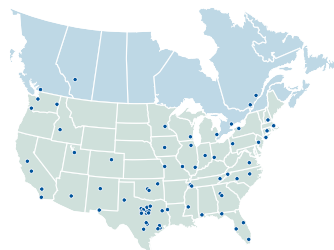
PRODUCT STYLE PURCHASED \_\_\_\_\_

INSTALLER'S COMPANY NAME \_\_\_\_\_



MasterHalco.com  
Branch service centers are located throughout North America.

©3/23



Scan me!

Find your local Master Halco branch and contact us today!

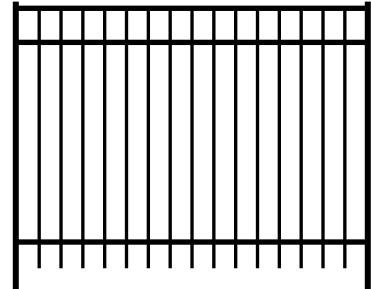
MH N13013



# STYLES & HEIGHTS

Five different panel styles are available in a wide assortment of sizes. All fence styles in Highland<sup>+</sup> Steel Commercial Fencing include matching welded walking gates and options for custom gates.

## UNIVERSAL TOP

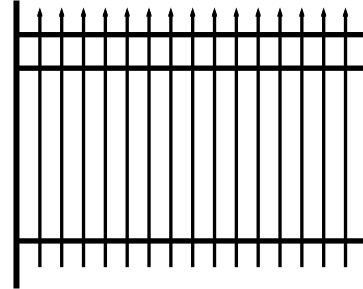


Modern styling of steel fencing that provides security and elegance in a simple design.

Rail Designs Available:  
3-rail

Heights Available:  
42", 4', 5', 6', 7', 8'

## SPEAR TOP

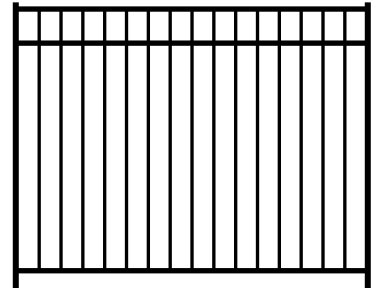


The classic wrought iron styling that provides an extra level of security.

Rail Designs Available:  
3-rail

Heights Available:  
4', 5', 6', 7', 8'

## UNIVERSAL/POOL

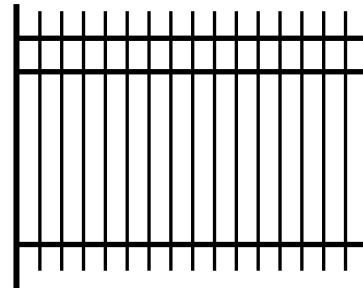


Modern styling with a flat bottom, perfect for pool applications. Please check your local pool code requirements.

Rail Designs Available:  
3-rail

Heights Available:  
4', 54", 5', 6'

## PICKET TOP

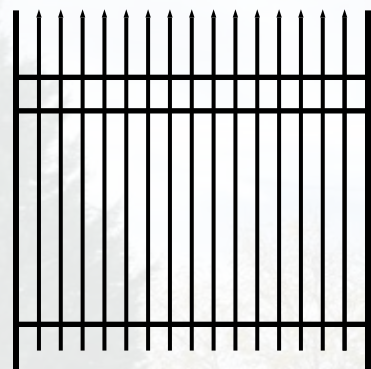


Simple, classic, and timeless styling providing security and clean views.

Rail Designs Available:  
3-rail

Heights Available:  
4', 5', 6', 7', 8'

## SECURITY



Security panel that provides an additional level of deterrent and armament.

Rail Designs Available:  
3-rail

Heights Available:  
7', 8'

# HIGHLAND<sup>+</sup>

## STEEL COMMERCIAL FENCING

Highland<sup>+</sup> Steel Commercial Fencing by Master Halco is the affordable steel fencing solution that offers strength, security, and clear views for any property. The design of the fence panel adapts effortlessly to the rolling terrain to enhance the beauty of the landscaping.

With a wide selection of the most popular styles, heights, and accessories, Highland<sup>+</sup> Steel Commercial Fencing provides the solution for higher-level security for residential and commercial properties.

The strength of steel and the high-quality, durable powder coat finish will provide years of long-lasting security and maintenance-free performance; all backed by a 20 year limited warranty.

## PRODUCT DETAILS

- 20 Year Warranty
- Panel Heights
  - Plus: 4', 5', 6'
  - Commercial: 7', 8'
- 1.19" W x 1.5" H 14 ga Rail
- 3/4" square pickets
  - Plus 4', 5', 6': 18 ga
  - Commercial 7', 8': 14 ga
- 2.5" (16ga & 14ga), 3" and 4" (11ga) square posts available
- Universal, Line, Flat, and Swivel Mount brackets
- 8' wide panels can rack up to 30", allowing the fence to flow with the terrain and blend into the landscape
- 8 stage durable powder coat finish for a long lasting, low-maintenance finish

